

# Franklyn James



Narrow Street, E14 8BP  
£3,600 Per Calendar Month



Narrow Street, E14 8BP

£3,600 Per Calendar Month

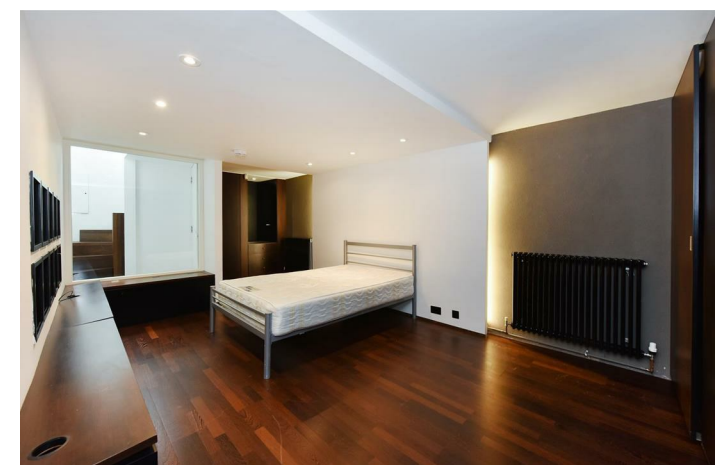
Explore this captivating four-story townhouse nestled in the heart of Limehouse. As you step through the entrance, you're welcomed by a spacious main reception area seamlessly connected to a dining space that opens into a fully fitted kitchen with ample storage.

On the first floor, you'll discover two inviting bedrooms. One boasts an en-suite bathroom, while the other features a private terrace. The top floor is home to the master bedroom, accompanied by a generously sized family bathroom. This level also offers access to an exclusive private roof terrace. Furthermore, the basement offers an additional living space.

This exceptional townhouse is available fully furnished. Canary Wharf is moments away from the property providing a plethora of local amenities.

## Description

- Furnished
- Modern four story townhouse
- Boasting over 1400 square feet
- Three spacious double bedrooms
- Fully fitted kitchen
- Two private roof terraces
- Ample storage
- Sought after location
- Close to Westferry DLR station
- Moments away from Canary Wharf



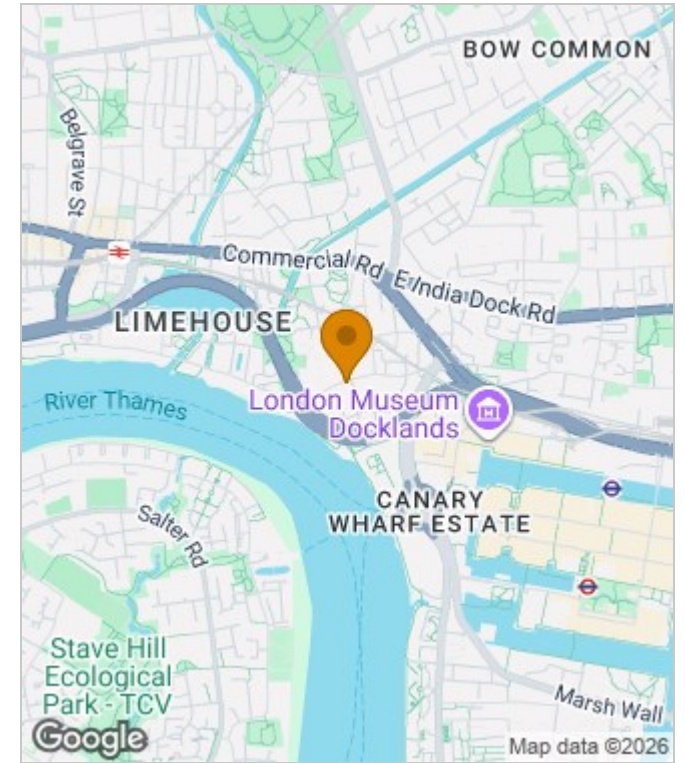
Furnished

Council Tax Band: F

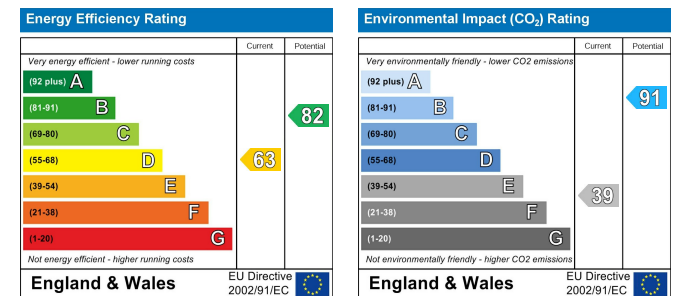
Available: 14th March 2026



### Area Map



### Energy Performance Graph



These particulars, whilst believed to be accurate are set out as a general outline only for guidance and do not constitute any part of an offer or contract. Intending purchasers should not rely on them as statements of representation of fact, but must satisfy themselves by inspection or otherwise as to their accuracy. No person in this firm's employment has the authority to make or give any representation or warranty in respect of the property.

**Franklyn James**

29 Narrow Street, London, E14 8DP  
 Tel: 02077911777 Email: [lettings@franklynjames.co.uk](mailto:lettings@franklynjames.co.uk) <https://www.franklynjames.co.uk>